

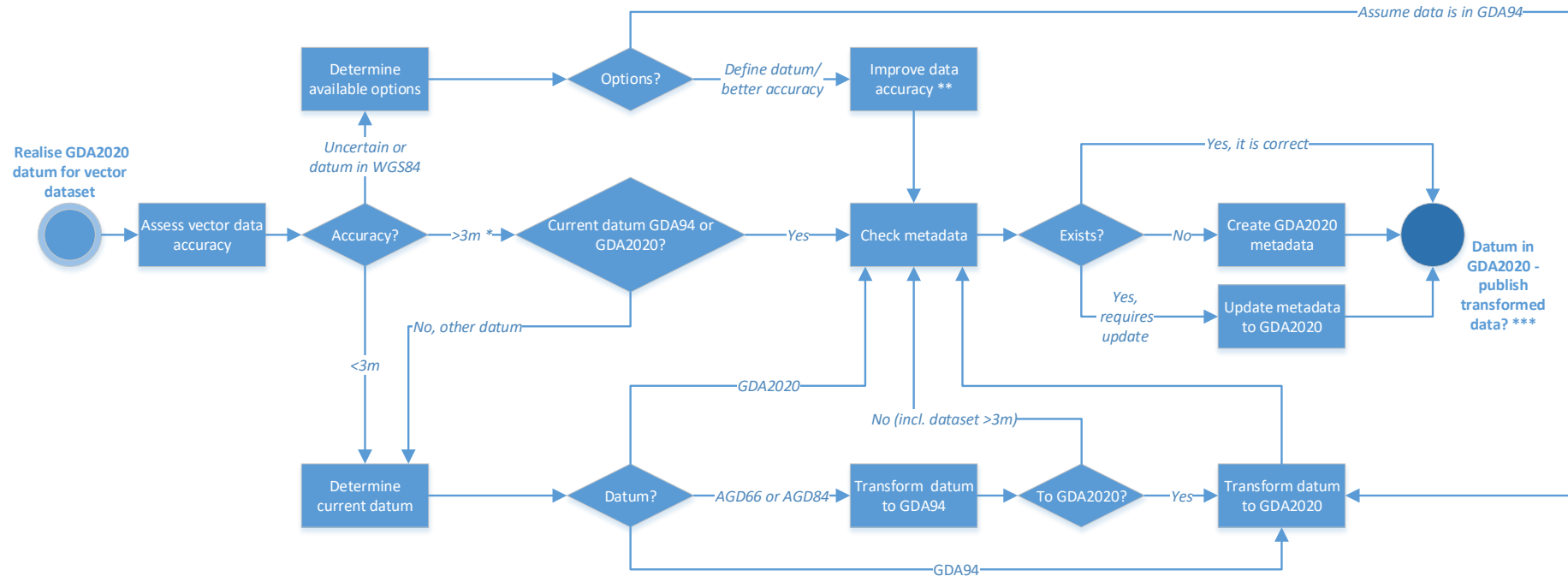


DATUM TRANSFORMATION

Vector Data Process

This information may assist in transforming vector datasets from a current datum to GDA2020 across your organisation.

Transformation Process



Datum Transformation Table – Vector Data

Datum transformation	Transformation File	EPSG Transformation Code	Comments
GDA94 --> GDA2020	GDA94_GDA2020_conformal.gsb	8446	Recommended for all datasets in Queensland; 7 parameter similarity transformation if ellipsoidal heights are to be transformed
	Transformation_Conversion.xlsx	8048	
AGD84 --> GDA94	National 84 (02.07.01).gsb	1804	NTv2 Transformation Grid, uncertainty is about 0.1 m; <u>Note 7</u> parameter similarity transformation is not highly accurate - estimated uncertainty is about 1 m
AGD66 --> GDA94	A66 National (13.09.01).gsb	1803	NTv2 Transformation Grid, estimated uncertainty is about 0.1 m; <u>Note 7</u> parameter similarity transformation is not highly accurate - estimated uncertainty is about 1 m
WGS84 --> GDA2020	Null transformation	8450	WGS84 at 2020 epoch

Detailed information about datum transformation can be found in the [Geocentric Datum of Australia 2020 Technical Manual](#). The general explanations of the concepts and terminology are available at the ICSM Fundamentals of mapping site [here](#). The transformation files can be obtained from [ICSM GitHub transformation grid repository](#).

Notes

- * If dataset's positional uncertainty/ accuracy is >3m just update metadata from the current datum to 'GDA2020'; this will indicate that data was not moved; however if this dataset is transformed to GDA2020, therefore moved, it should be recorded in the metadata as such.
- ** E.g. consider re-survey to improve accuracy and to record datum used; note that the map products may have to be recreated in GDA2020; mixing different datums in one product is not recommended.
- *** See Display/ Publish Data factsheet.

For more information on implementing GDA2020 in Queensland please contact Matt Higgins, Department of Natural Resources, Mines & Energy, qldgda2020@dnrme.qld.gov.au or 07 3330 4481.

Published: October 2019