

# Serious accidents and high potential incidents

## Mineral mines and quarries

### Compilation of reports for May 2017

#### Gravity

##### Fall of equipment/material (8)

- A bracket supporting a 25 mm fire water pipe failed. As the weight shifted, other brackets failed causing several lengths of pipe to fall 7 m to the ground below.
- The feed chute on a Sag Mill become blocked causing additional feed material to fall 4 m to the floor.
- A quick release bucket on a 30 t Hitachi excavator detached, as the machine was slewing, and fell to the ground.
- A crew was stripping bags from a baghouse when a 700 g pipe clamp fell 9.5 m. A worker was struck on the forearm by the falling clamp.
- A timberman was using an overhead crane to remove scrap vent bags from a loading pass. The overhead crane contacted a tramp steel magnet causing it to dislodge, fall and strike the timberman's leg. The timberman sustained a compound fracture to their right leg.
- The feed bin to a crushing plant was closed to allow people to clear the primary crusher. The truck driver did not check if the tip point was open or closed. He then proceeded to tip material into the bin.
- While a filter plate was being removed for maintenance it slipped off the rack and fell 300 mm onto the floor.
- A worker received minor grazing to his leg when part of a plugged ore pass delaminated and fell 4 m. Workers were installing scaffolding inside the bin at the time.

#### Vehicle

##### Collision with another vehicle (5)

- A Cat 988 loader reversed into a Volvo loader that had entered the work area. The Volvo driver did not receive confirmation from the Cat 988 loader driver that he was clear to enter the work area.
- An underground loader turned into a return air raise access and made contact with a light vehicle that was parked in the access. The occupants of the light vehicle were not injured.
- While turning a corner a Cat R2900 loader contacted a Normet charge car that was parked in a cross cut.
- A WL580 Liebherr loader, reversing off a shot after distributing stemming material ran over the bonnet and cabin of a light vehicle parked on a bench.
- A Cat 992C loader reversed into a Cat 776 D long haul truck. The loader was loading the truck at the time.

##### Collision with a natural or built structure (2)

- A tyre fitter was moving a vehicle in a workshop when it came into contact with the oil separator sump barrier.
- A light vehicle rolled 28.5 m down a ramp and into a store area, after the operator exited the vehicle to enter the store.

##### Rollover (1)

- During tipping off from a trailer, the tailgate to the trailer did not open. When it did open, the sudden flow of material caused the trailer to rollover.

## Electrical

### Arc Flash/blast (2)

- An electrician was working on an energised distribution board with the escutcheon panel removed. During the work, an earth wire touched the energised busbar.
- A haul truck was driven under an 11 kV power line with the body raised. The exclusion zone was breached but no contact was made with the overhead line.

## Thermal

### Fire (5)

- While a Normet Spraymec was parked and idling when the operator noticed a fire in the engine bay around the turbo.
- Oxy cutting work was being performed, to replace a conveyor discharge chute, when a transfer conveyor caught fire. Employees on site attempted to extinguish the fire but were unsuccessful. The transfer conveyor was destroyed.
- A fire occurred in the engine bay of a Cat loader when a hydraulic line ruptured and sprayed oil onto hot components.
- A water truck was tramping up a decline when a hydraulic hose came away from its fitting spraying oil onto hot components and causing a fire.
- The operator of a remote loader observed a fire in the engine bay of the loader. The operator remotely activated the onboard fire suppression system and extinguished the fire.

## Mechanical

### Entangled in rotating plant (1)

- Workers were working inside a flotation cell when it was discovered that the group isolation had been mistakenly applied to another line of cells.

## Chemicals

### Acid (1)

- A leak on a sulphuric acid mixer was noticed 4 minutes after startup. The leak sprayed acid onto a reactor and down 7 m to the ground floor where it hit the reactor bund wall.

## Non Hazard Specific

### Other (1)

- A grader operator suffered a whiplash injury while grading the access road.

## Pressure

### Failure of a pressure vessel (2)

- A worker received lacerations and fractures while removing coupling bolts from a pressurised system. The system had been isolated however; the pressure had not been bled off completely.
- A slurry pump deadheaded and failed catastrophically. Ejecting shrapnel caused damage to adjacent structures including I beams and a feed tank.

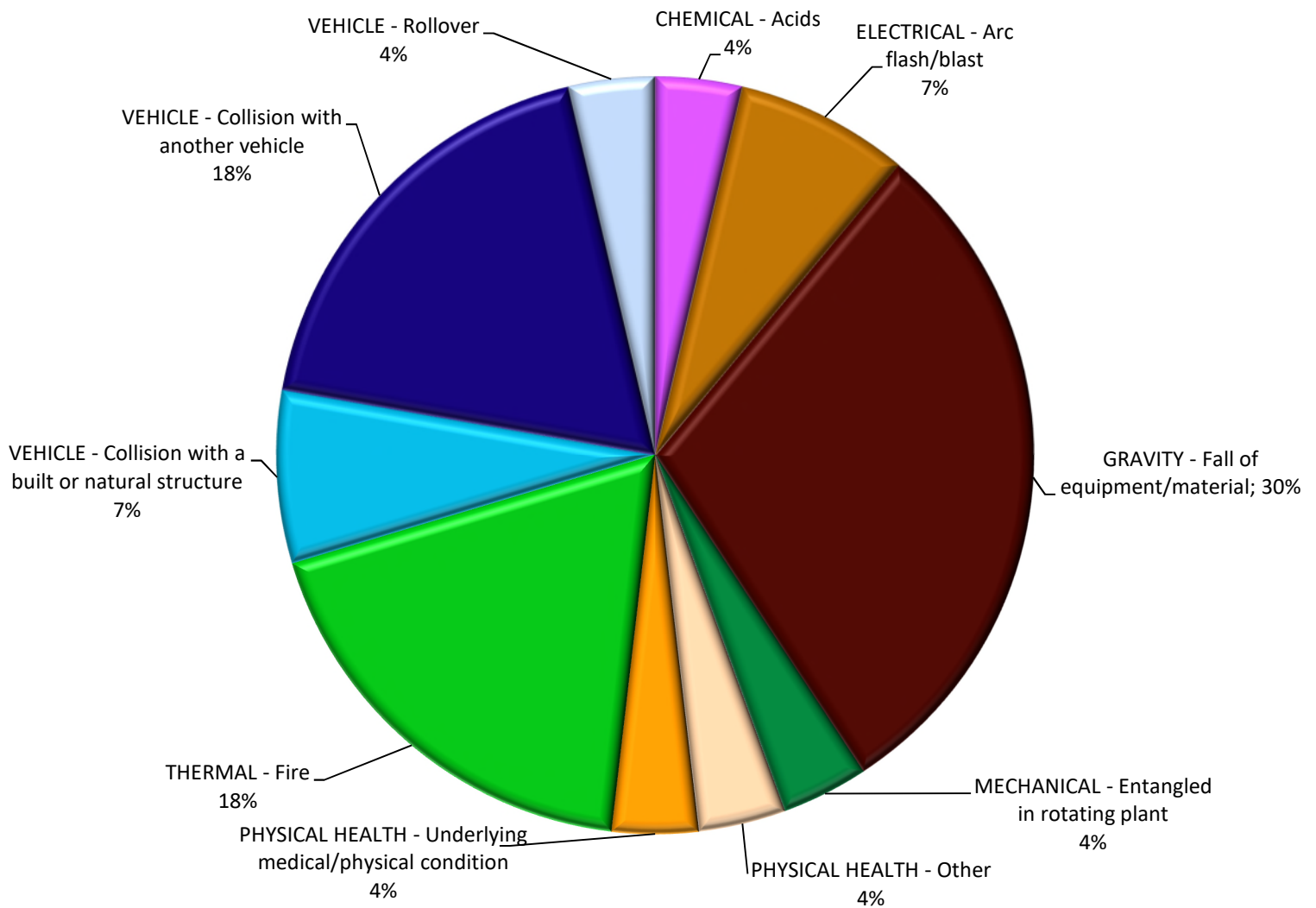


Chart 1 – May 2017 (30 Incidents)

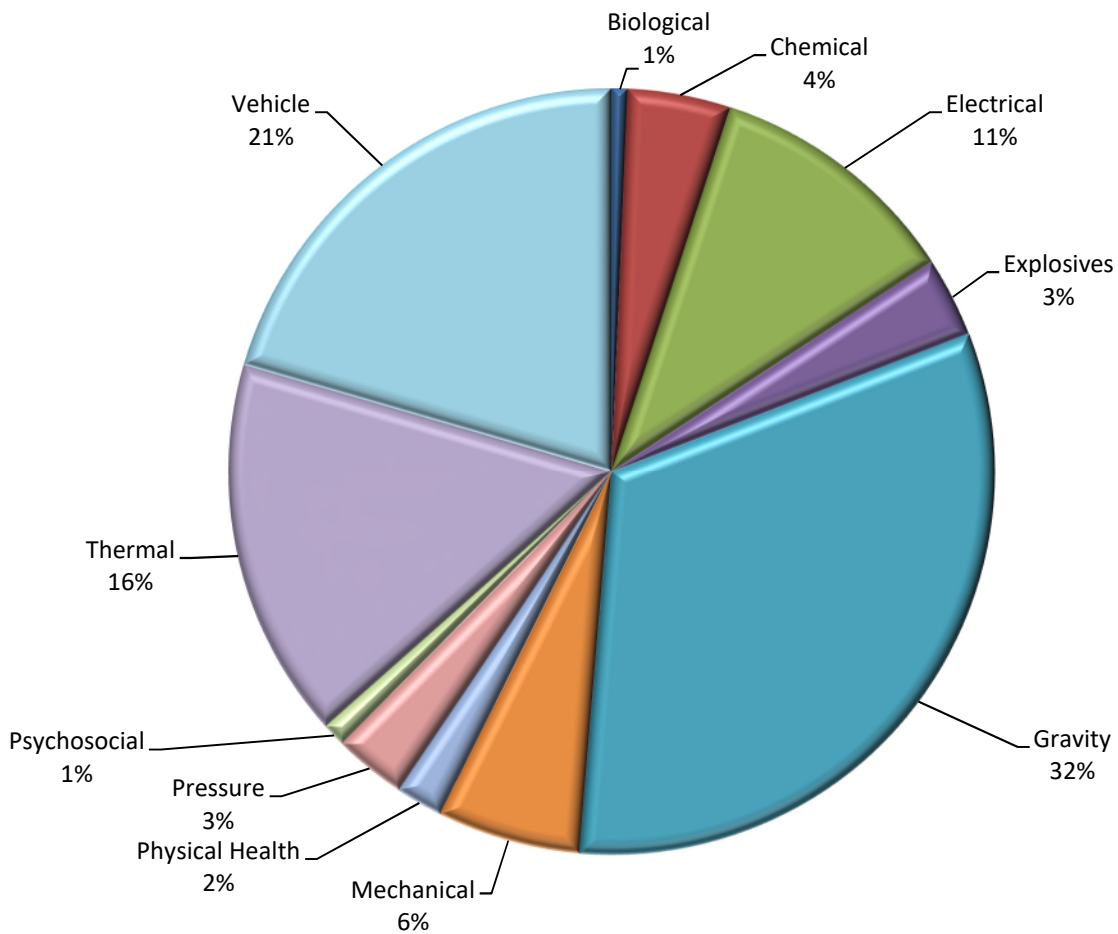


Chart 2 – 12 month rolling average to end May 2017 by Hazard Category (298 Incidents)

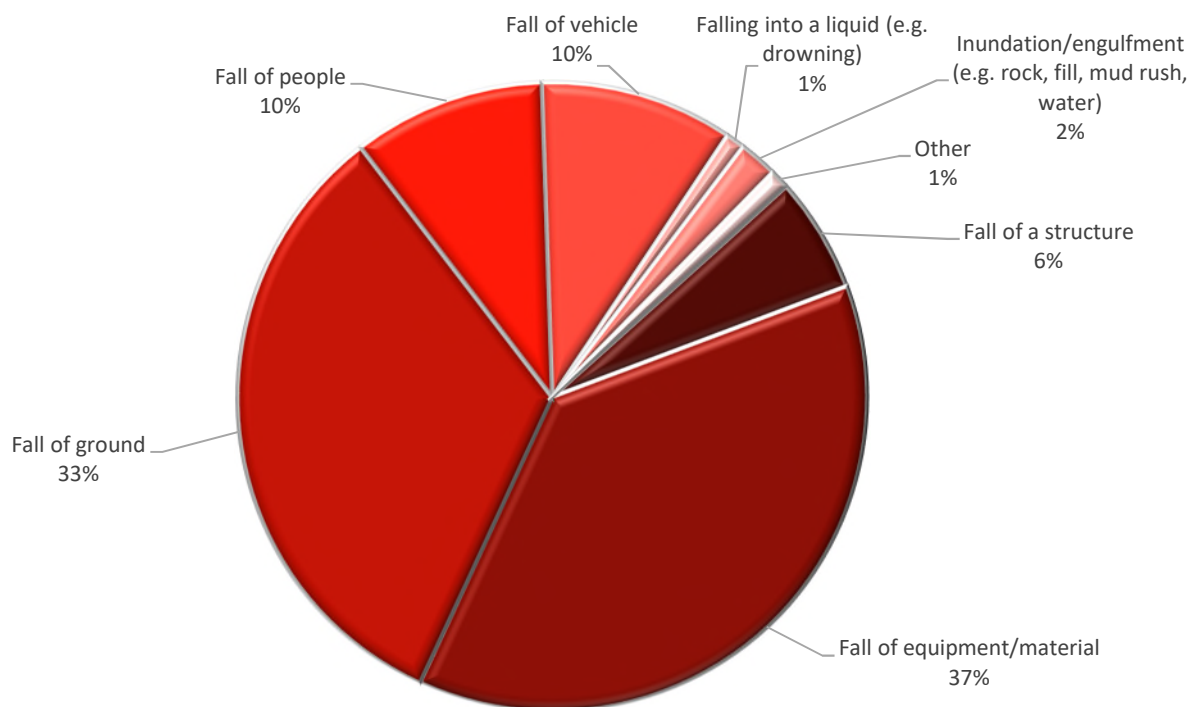


Chart 3 - July to May 2017 Breakdown of Gravity Hazard Category (101 Incidents)

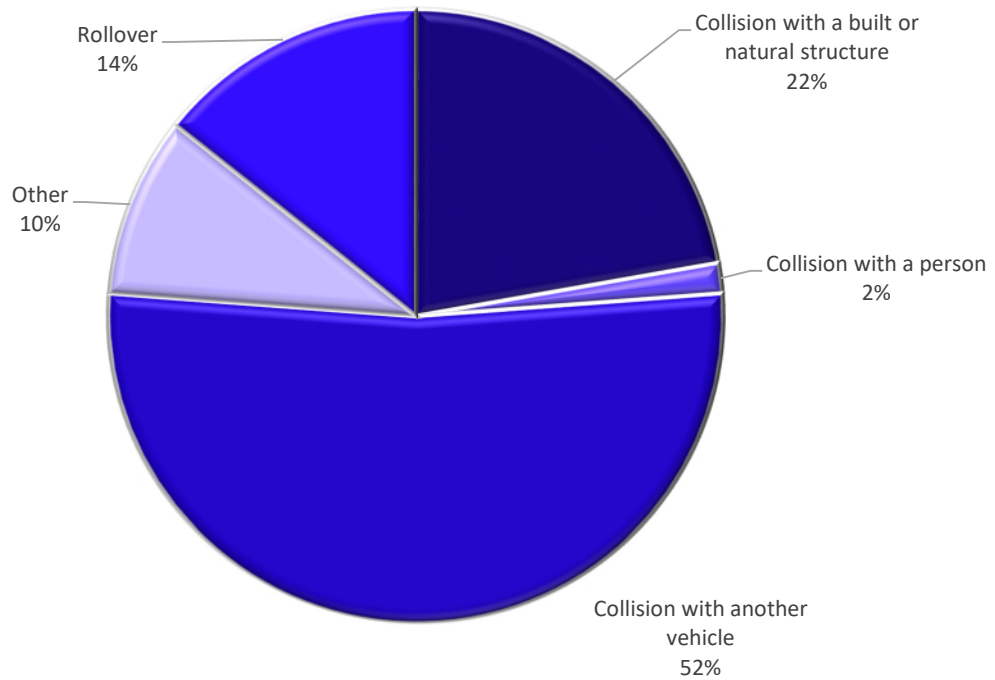


Chart 4 - July to May 2017 Breakdown of Vehicle Hazard Category (63 Incidents)

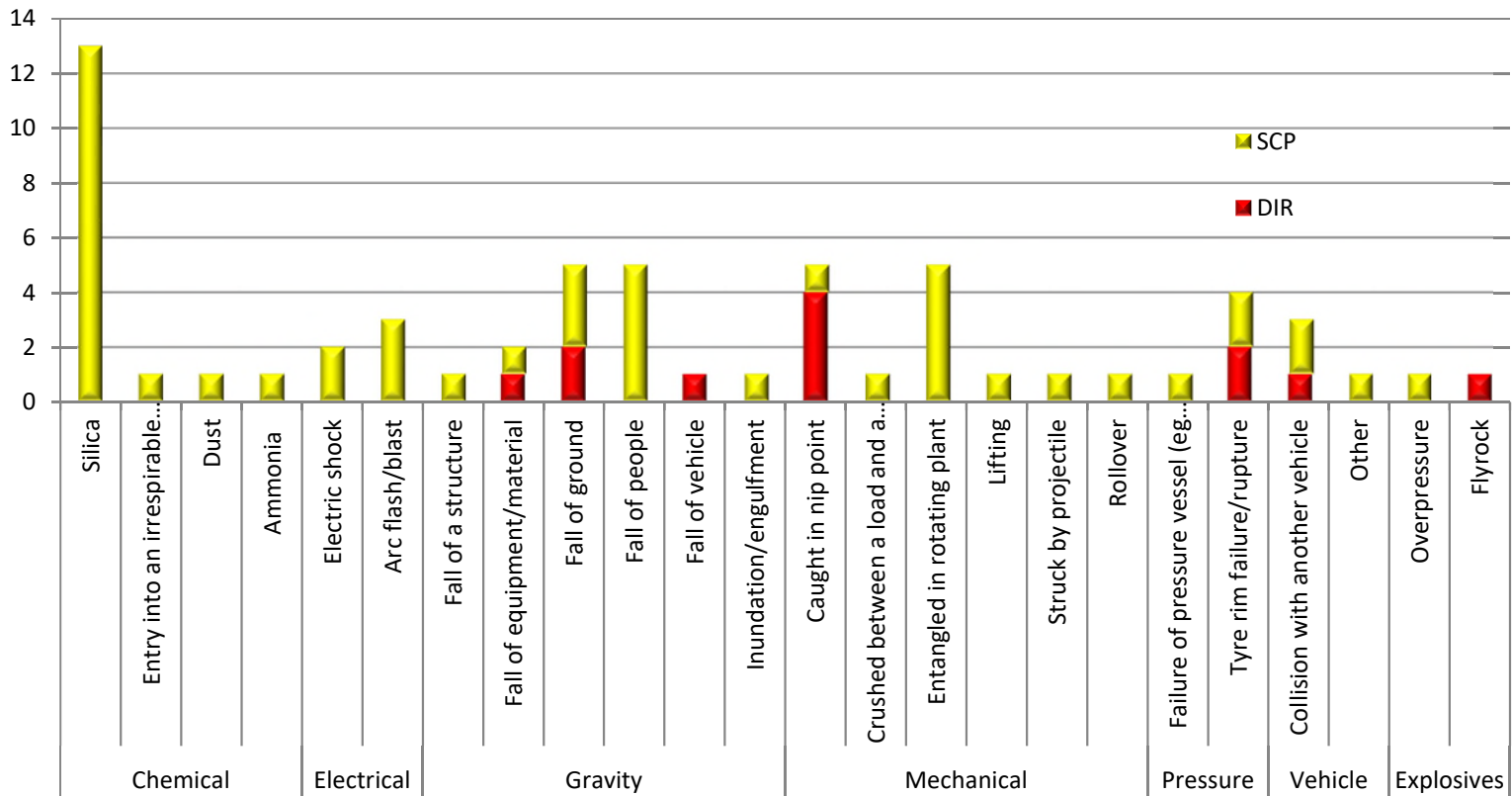


Chart 5 - May 2017 Compliance Matters Issued by Hazard Category (61 Issued)

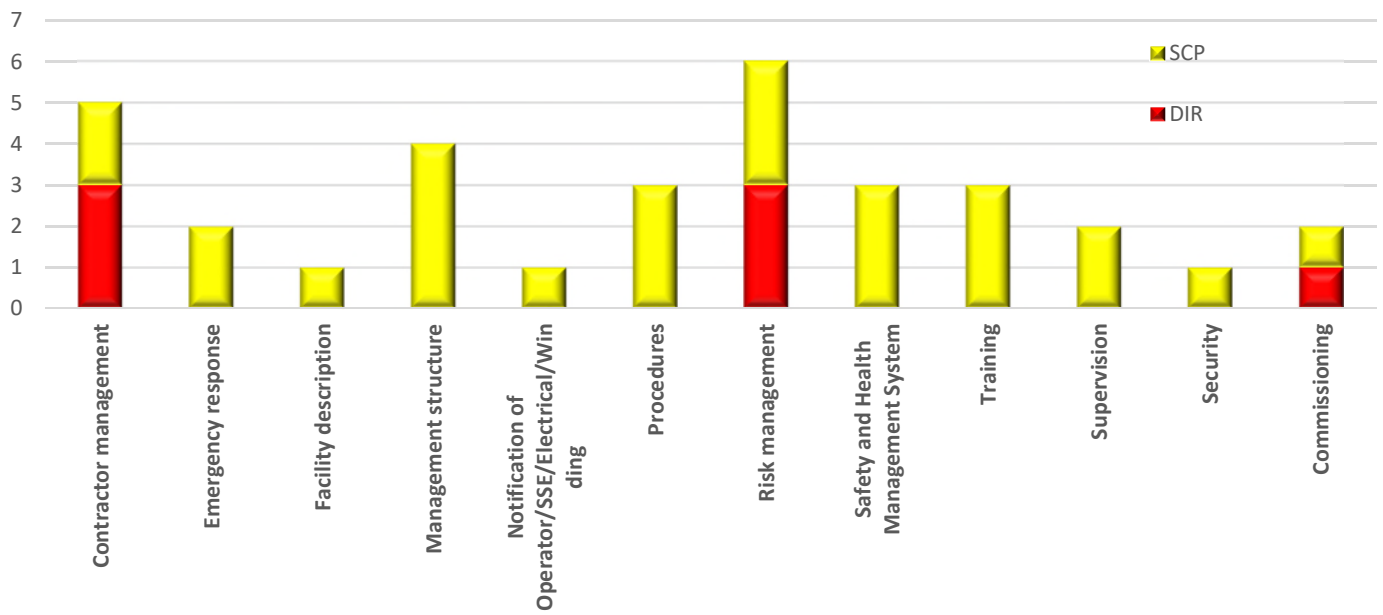


Chart 6 - May 2017 Compliance Matters Issued by Non Hazard Category (33 Issued)

Past Mineral Mines and Quarry summary reports can be sourced at <https://www.business.qld.gov.au/industry/mining/safety-health/mining-safety-health/accidents-incidents/serious-and-high-potential>