

# Serious accidents and high potential incidents- Metalliferous mines and quarries

## Compilation of reports for October 2016

### Gravity

#### Fall of equipment/material (2)

- During the lifting of a dewatering pump and cable, the cable detached from the pump and fell approximately 20 m to the ground.
- Overhead protection that had been erected as part of a convertor rebrick slipped down approximately 1 m. The investigation identified that the supports had not been tightened correctly.

#### Fall of ground (4)

- A 30-40 tonne rockfall occurred in an underground drive. The area where the fall occurred was on a basement contact zone in a little used but accessible drive.
- The crown of an unfilled stope overbroke into the sidewall and floor of a drive. Technical staff who were assessing the area discovered the breakthrough.
- Three tonnes of rock of fell from the shoulder of a cross cut as a result of local mining induced stress.
- An opal miner was fatally injured when he was buried by a rockfall from the wall of the shallow trench he was mining in.

### Fall of vehicle (4)

- A surface drill rig was drilling grout holes on a concrete plinth on a tailings dam wall when it lost traction on one track and started to slide down the plinth. The operator jumped from the cabin and the rig continued to slide 35 m to the bottom of the embankment.
- The body of dog trailer tipped onto its side while the tray was being raised to unload material.
- While a Bobcat was sweeping a road the machine slipped off the edge of the road and ended up balanced on the shoulder. The operator exited the loader through the rear window.
- While tipping a load of sand onto a stockpile, the dog trailer on a truck has rolled onto its side.

### Fall into a liquid (1)

- An abandoned ute was found partially submerged in an evaporation pond at a mine. The owner of the ute was identified with assistance of the police.

### Vehicle

#### Collision with a structure (2)

- While driving a light vehicle along a seismic exploration road, the operator failed to negotiate a bend in the road and collided with a tree.
- As a mobile crusher was being trammed out of a work, the crusher contacted a discharge conveyor of a mobile screening plant parked nearby.

## **Collision with another vehicle (2)**

- While reversing a Hitachi 80 tonne excavator collided with a Bell B40D dump truck that was parked waiting to be loaded by the excavator.
- An Elphinstone 2900 underground loader turning into a stockpile bay struck the bullbar of a light vehicle which was parked at the entrance to the bay.

## **Mechanical**

### **Entanglement in rotating plant (1)**

- While drilling shot holes on a bench a driller caught his left ring finger on the tip of the spinning drill bit. He lost part of his fingertip.

## **Explosives**

### **Flyrock (1)**

- During preparation for a blast a light vehicle has driven past a blast guard position and into a blast exclusion zone. Another blast guard identified that the vehicle was within the exclusion zone and had the vehicle removed.

## **Electrical**

### **Arc flash / blast (1)**

- An electrician received burns to his right hand when an arc flash occurred. At the time the electrician was operating a circuit breaker in an electrical control panel.

## **Chemical**

### **Other (1)**

- A hazardous substance spill occurred when a chemical reaction took place after waste oil was pumped into a disposal tanker that contained residual chemicals from a previous job. The area was evacuated and the reaction was allowed continue and vent from the tanker.

## **Psychosocial**

### **Other (1)**

- An underground worker was admitted to hospital with suspected dehydration. The worker began feeling unwell during the shift and was transported to the surface for medical attention.

### **Other (1)**

- A worker who was driving a truck at low speed veered off the road and came to rest on the side of the road. Witnesses who saw the event found the driver unresponsive, slumped over the steering wheel. Emergency services were called and CPR commenced. The driver was not able to be revived.

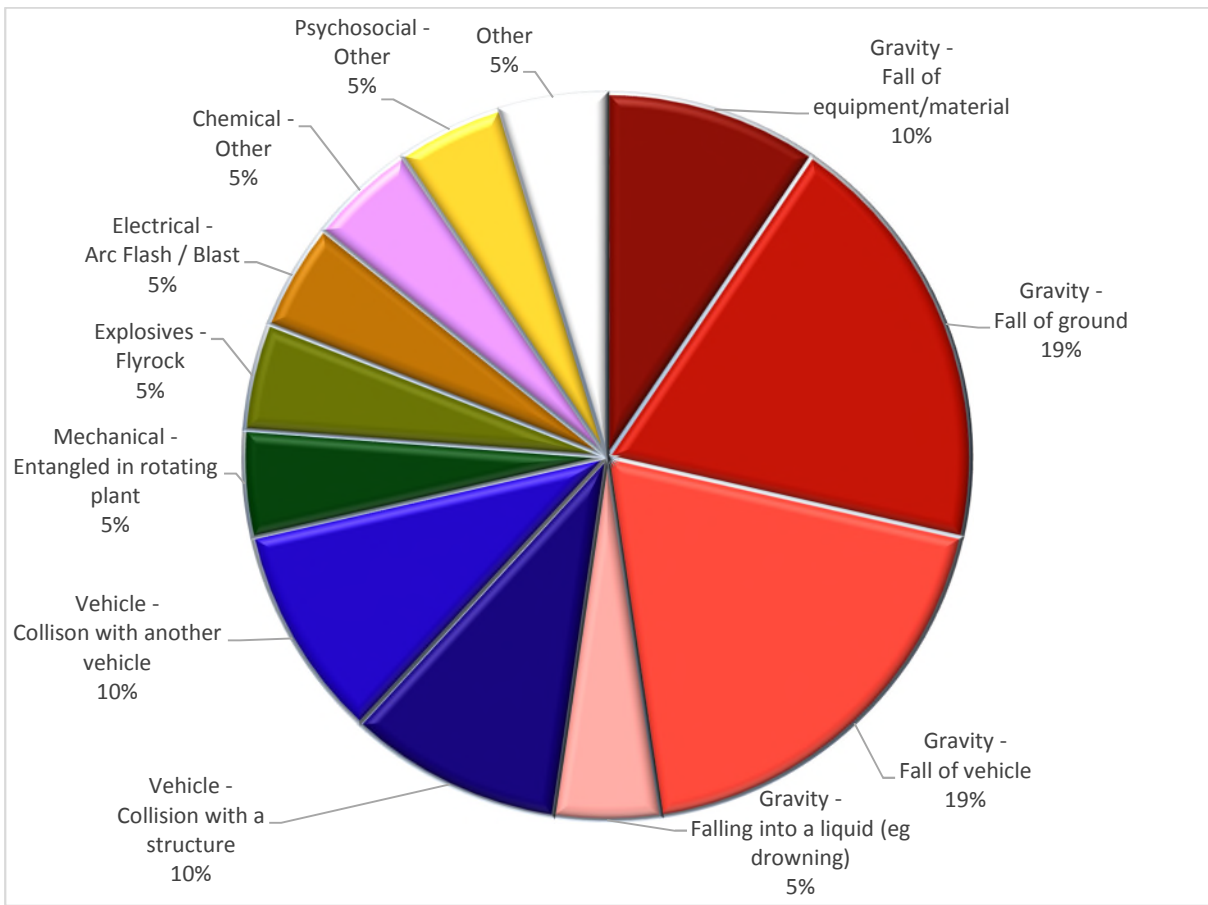


Chart 1 - October 2016 Events Reported (n=21)

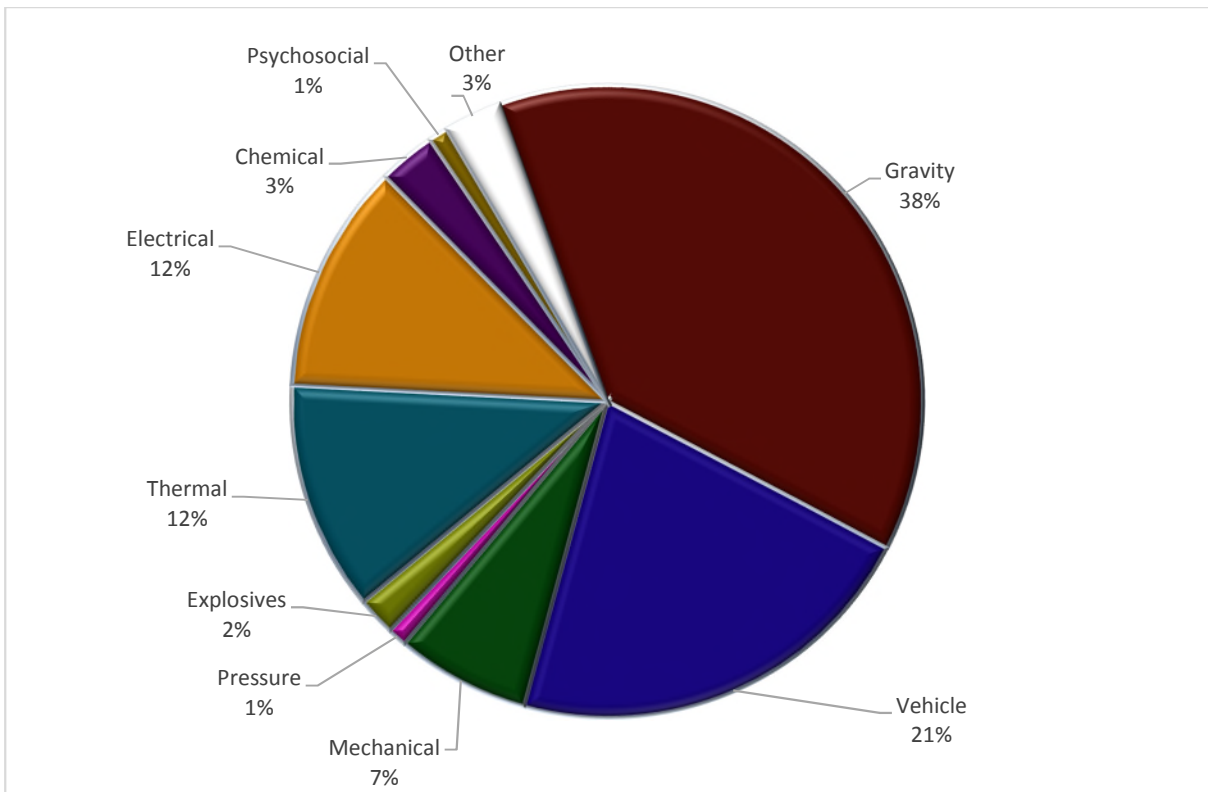


Chart 2 - July to October 2016 by Hazard Category (n=101)

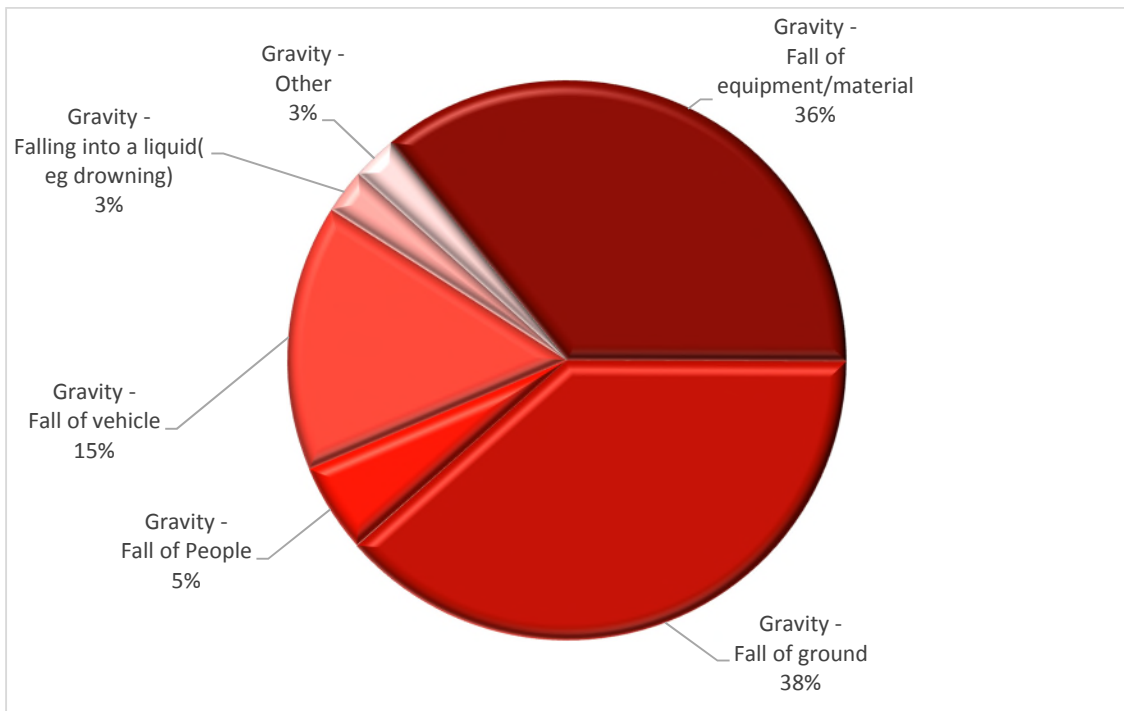


Chart 3 - July to October 2016 Breakdown of Gravity (n=37)

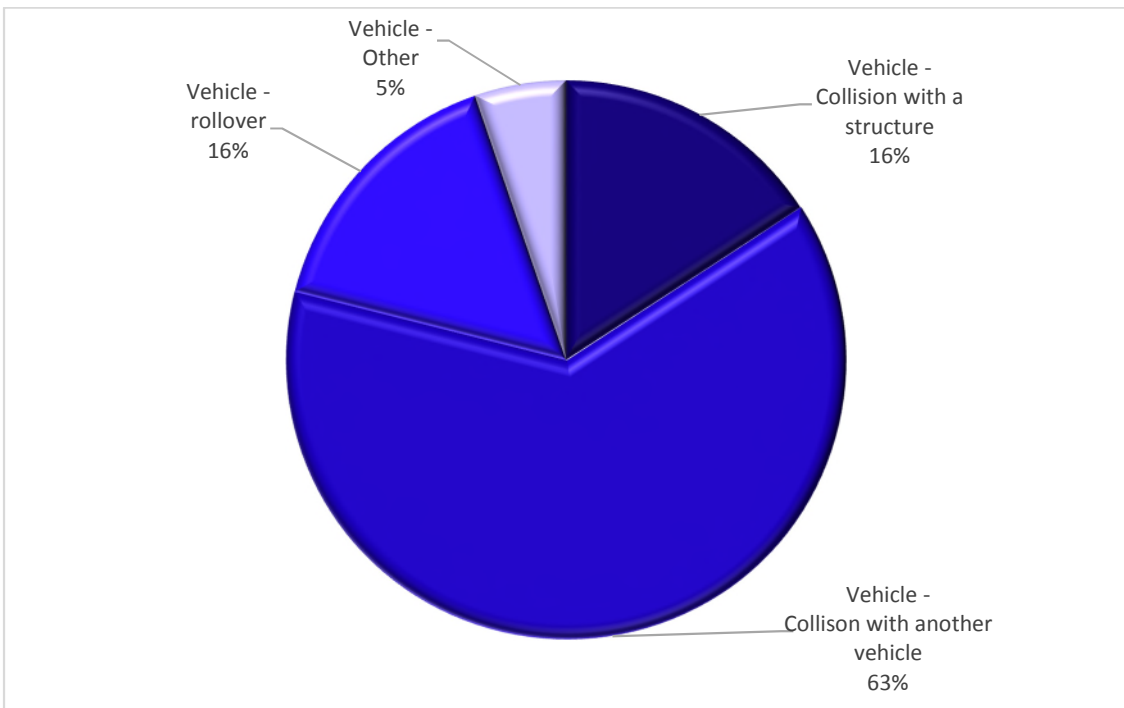


Chart 4 - July to October 2016 Breakdown of Vehicle (n=23)

---

Past Metalliferous Mines and Quarry summary reports can sourced at <https://www.business.qld.gov.au/industry/mining/safety-health/mining-safety-health/accidents-incidents/serious-and-high-potential>

---