

Queensland Mineral Mines and Quarries

Serious accidents and high potential incidents

Compilation of reports for October 2017

Gravity

Fall of ground (3)

- A 15 t wedge failure occurred at the top crest of a quarry. The material was contained within the exclusion zone.
- A 3 cubic meter fall of a side wall in a drive occurred where a worker had been standing.
- During buttressing work on a tailings dam, rocks were pushed over a windrow and onto the access road below.

Fall of people (3)

- A sales truck driver injured his hip when he fell while climbing into a truck.
- A maintenance contractor sustained a laceration to his leg when he misjudged his step and fell 1 m off a work platform.
- Workers removed a section of a walkway to allow access for maintenance at a lower level, but did not install edge protection or wear height safety equipment.

Fall of equipment/material (2)

- While removing a broken rod from a blocked vertical paste pipe, the driller clamped the rod in the hole and moved the head. The clamp failed, allowing the rod string to fall to the ground in front of the rig.
- An operator was placing a drill steel into a vehicle when he dropped the steel severing part of his thumb.

Explosives

Misfire (1)

- During excavations of a sump at a quarry, a misfire was detected.

Mechanical

Struck by projectile (1)

- During commissioning of a reciprocating compressor, the compressor pulley fragmented and dislodged the guard. Fragments of the pulley were found approximately 3.5 m from the compressor.

Thermal

Fire (4)

- The operator of a CAT D11 dozer noticed the 'check engine' light come on and smoke coming from the engine bay.
- A diesel fire occurred in the engine bay of a CAT 990H face loader. The on board system activated and extinguished the fire.
- When parking a CAT water truck at the end of the shift, an operator noticed smoke in the engine bay. The operator activated the AFFF to extinguish the fire.
- During a post blast inspection at a quarry a small grass fire was observed.

Vehicle

Collision with a person (2)

- The driver of a light vehicle turned on the ignition key when not in the vehicle. The vehicle was in reverse and moved off with nobody at the wheel.
- A pedestrian entered the work area of a CAT 2900 loader without the knowledge of the loader operator.

Collision with another vehicle (1)

- A near miss occurred when a light vehicle failed to give way to a CAT 776D haul truck.

Loss of control (2)

- The driver of a B-Double was in the process of hooking up a trailer in a parking area. He had only applied the trailer brake and as he was connecting the air hoses, the brakes released on the trailer and it and rolled into a parked truck.
- A 10 t rear tipper truck stalled on an incline. While the operator was attempting to re-start the truck, it travelled backwards down the hill to the bottom glancing a windrow on the way.

Collision with a built or natural structure (1)

- The driver of a light vehicle turned on the ignition key when not in the vehicle. The vehicle moved forward without a driver and collided with a building before the engine stalled.

Rollover (1)

- An operator was driving a loaded Volvo 40T articulated dump truck down slight decline when the tail shaft failed and tub of truck has overturned.

Other (1)

- While hauling ore onto a leach pad via a ramp, a roadtrain lost traction, slid backwards and jack knifed two trailers.

Electrical

Electric shock (4)

- A mechanical fitter was attending a blocked pump on a thickener. While working near the pump he brushed his arm on a solenoid plug adjacent to the pump line and received an electric shock. The plug was inspected and the body was found to be cracked, which had allowed water to enter.
- While tramming an excavator on a road adjacent to 11 KV power lines, an operator has accidentally screwed the excavator causing the bucket to contact a power pole. This caused the wires to slap together. The protection operated and isolated the lines.
- A maintenance contractor was replacing a speed sensor on a conveyor when he received a low voltage electric shock from an exposed wire.
- A boilermaker was welding in a tight location when his right shoulder touched the earth lead and he received an electric shock. The day was hot and humid and the boilermaker had been perspiring.

Other (1)

- Water entered the pendant of a crane causing the crane to traverse in an uncontrolled manner.

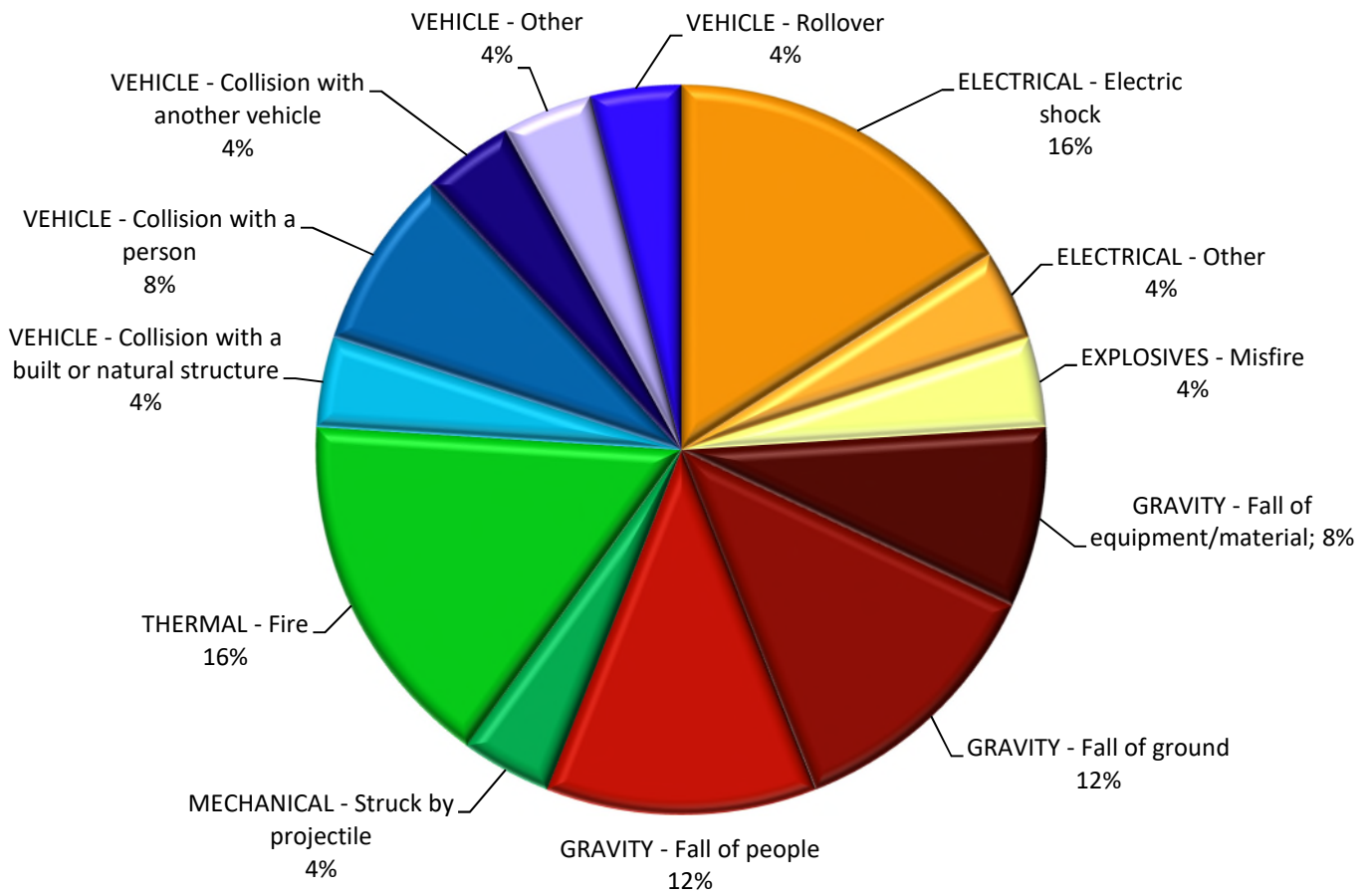


Chart 1 - October 2017 (25 Incidents)

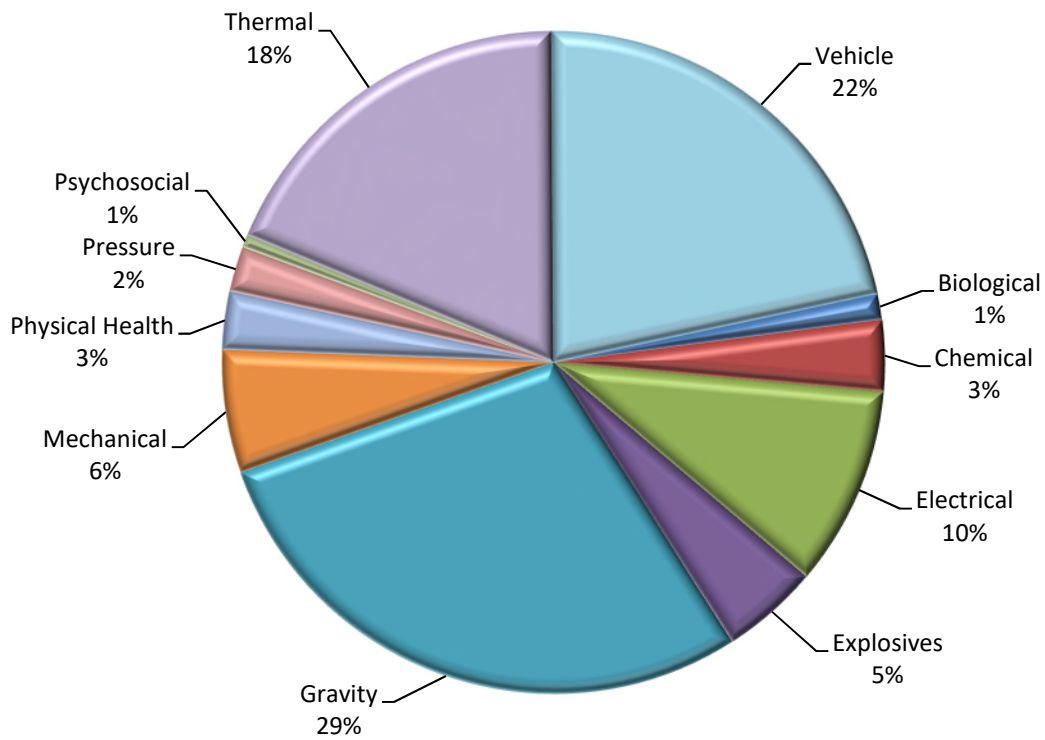


Chart 2 - 12 Month rolling average to end October 2017 by Hazard Category (317 Incidents)

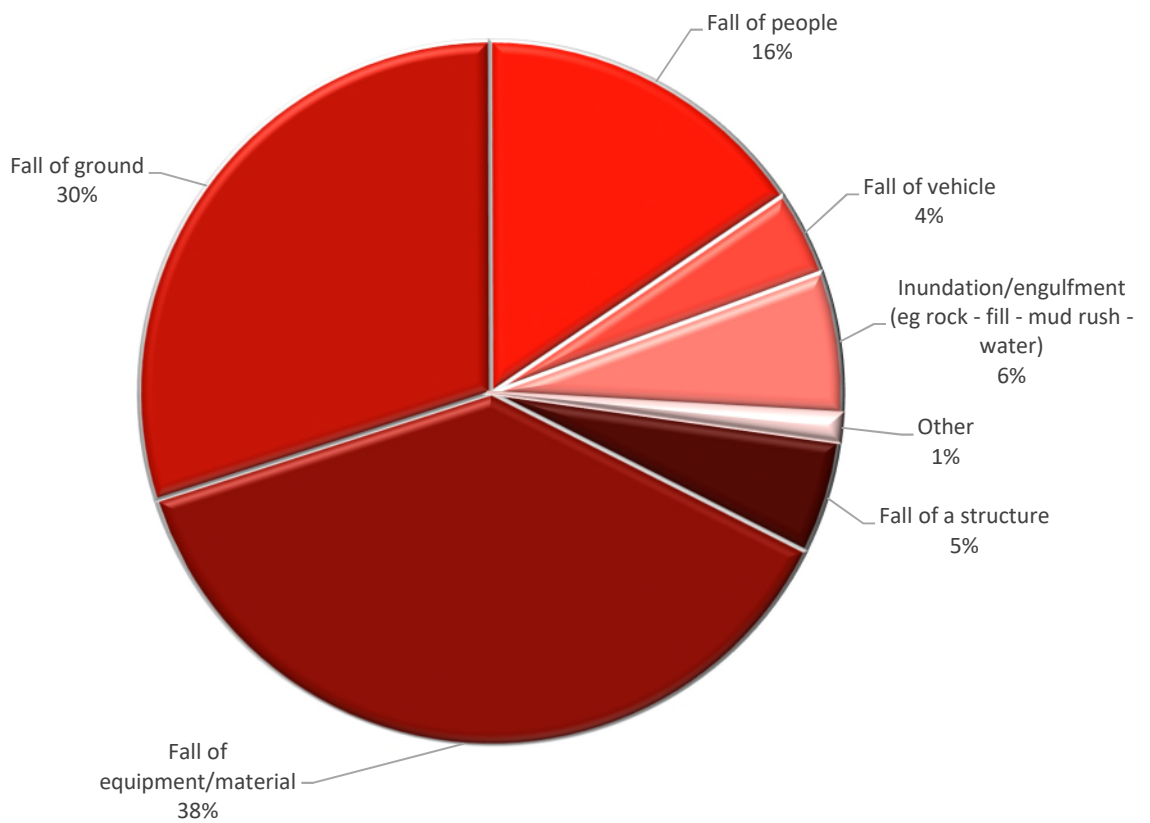


Chart 3 – January to October 2017 Breakdown of Gravity hazard category (77 incidents)

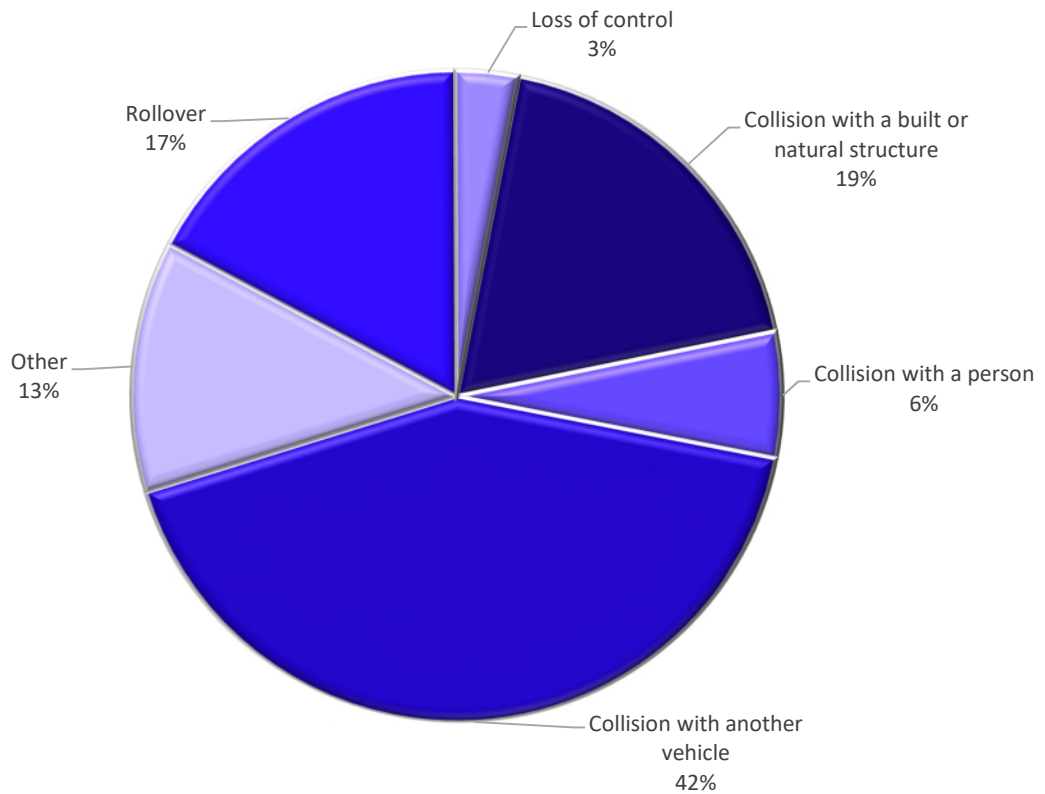


Chart 4 – January to October 2017 Breakdown of Vehicle hazard category (64 incidents)

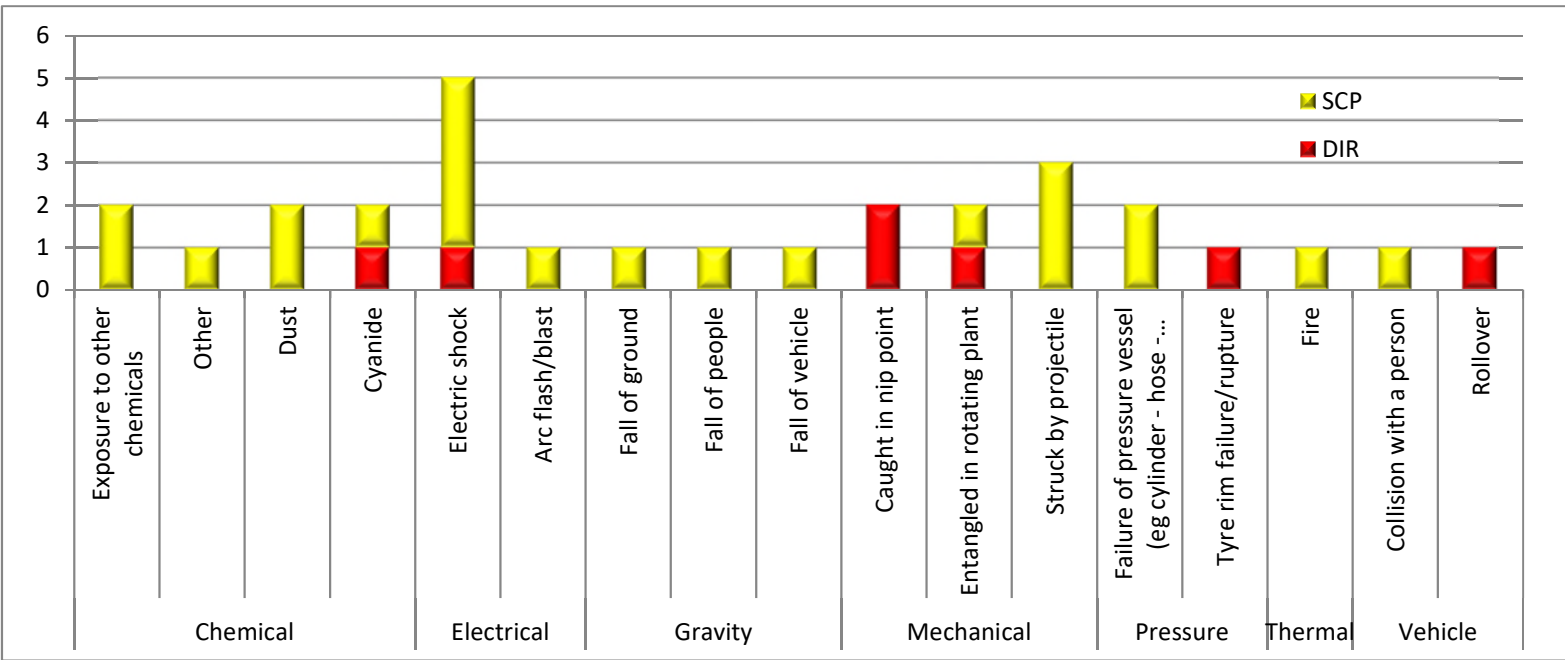


Chart 5 - October 2017 Compliance matters issued by Hazard category (25 Issued)

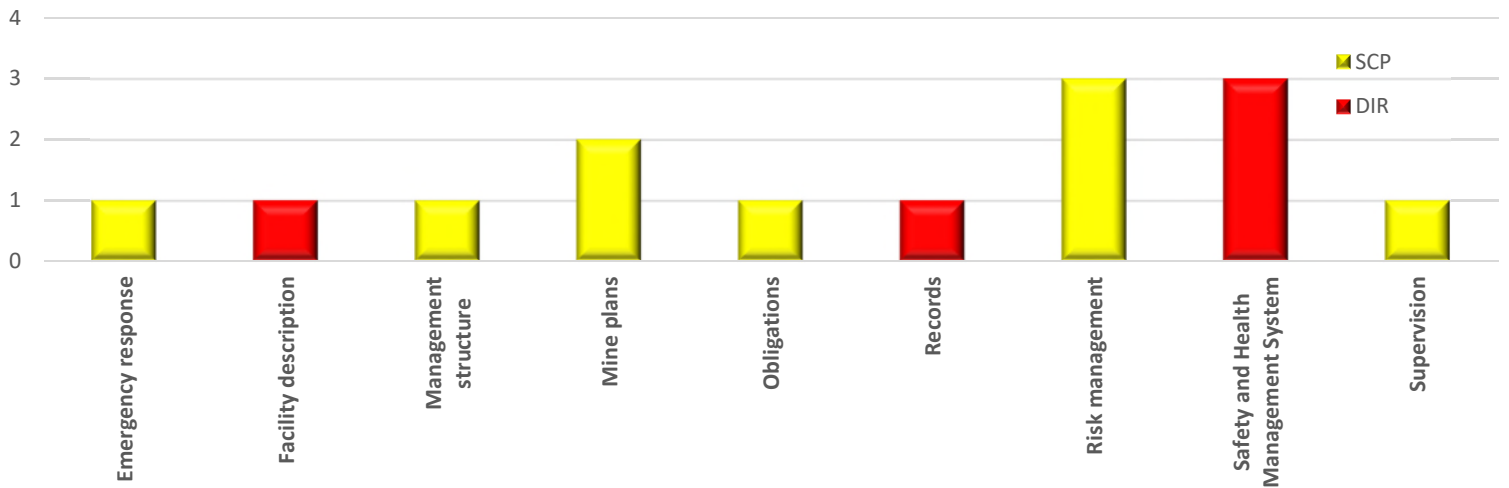


Chart 6 - October 2017 Compliance matters issued by Non-Hazard category (14 Issued)

Past Mineral Mines and Quarry summary reports can be sourced at <https://www.business.qld.gov.au/industry/mining/safety-health/mining-safety-health/accidents-incidents/serious-and-high-potential>