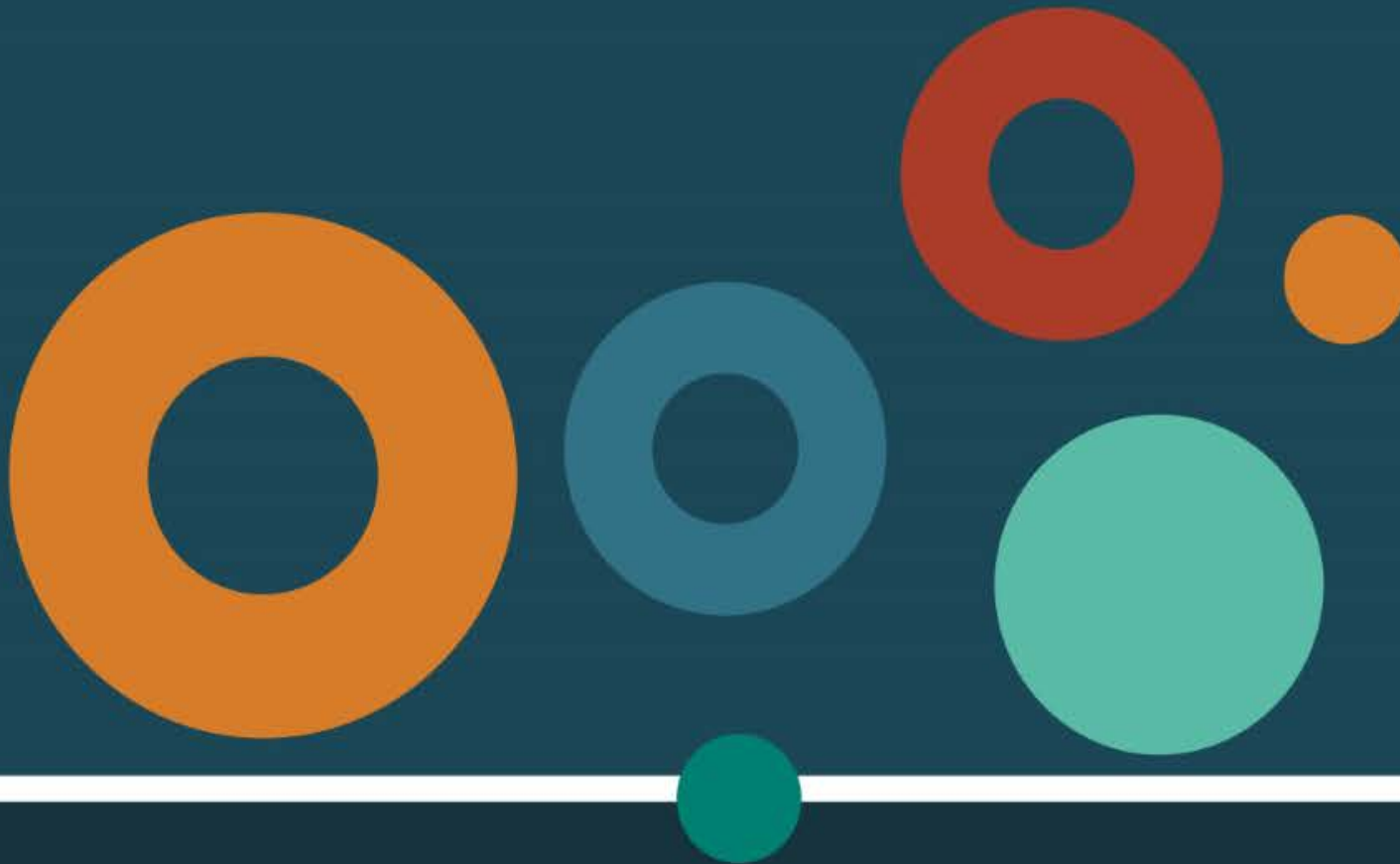


Industry Leaders Briefing 2018

Luca Rocchi

Chief Inspector of Mines

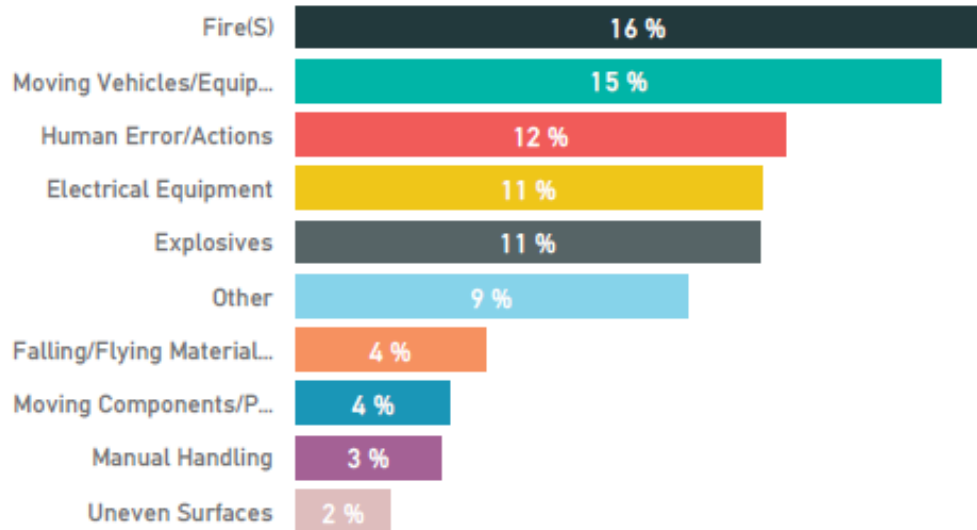




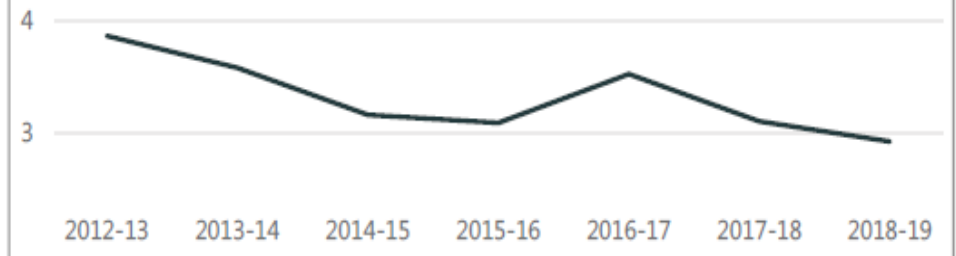
Five-year performance



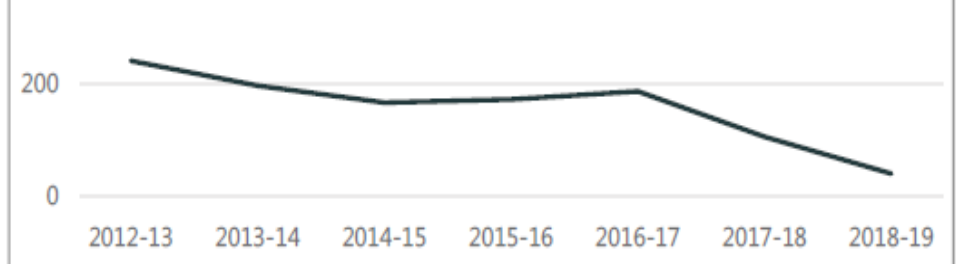
Top 10 Hazards



LTIFR



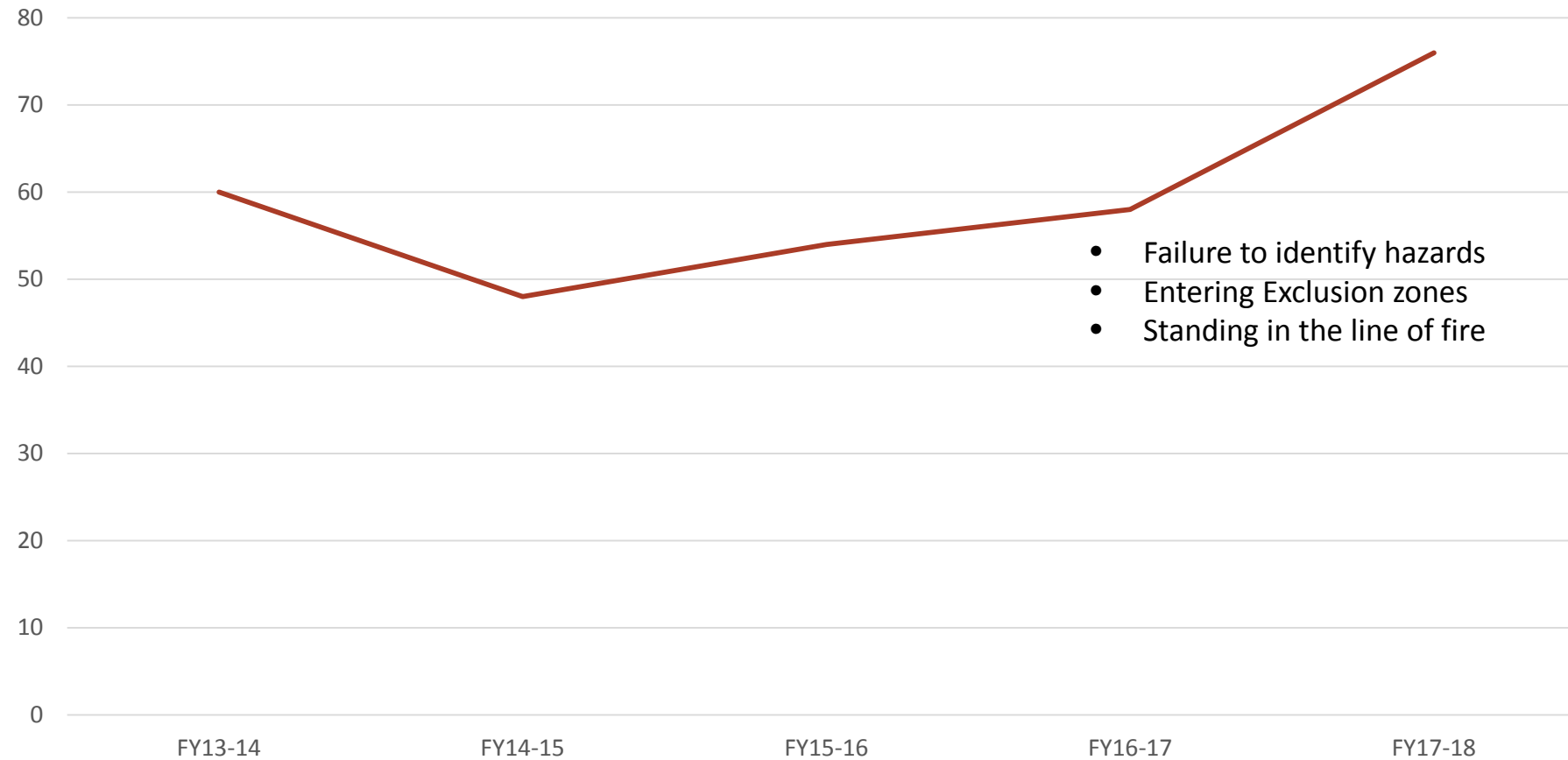
Severity Rate - All Incident Types



Five-year Performance



Coal Serious Accidents



Highlights

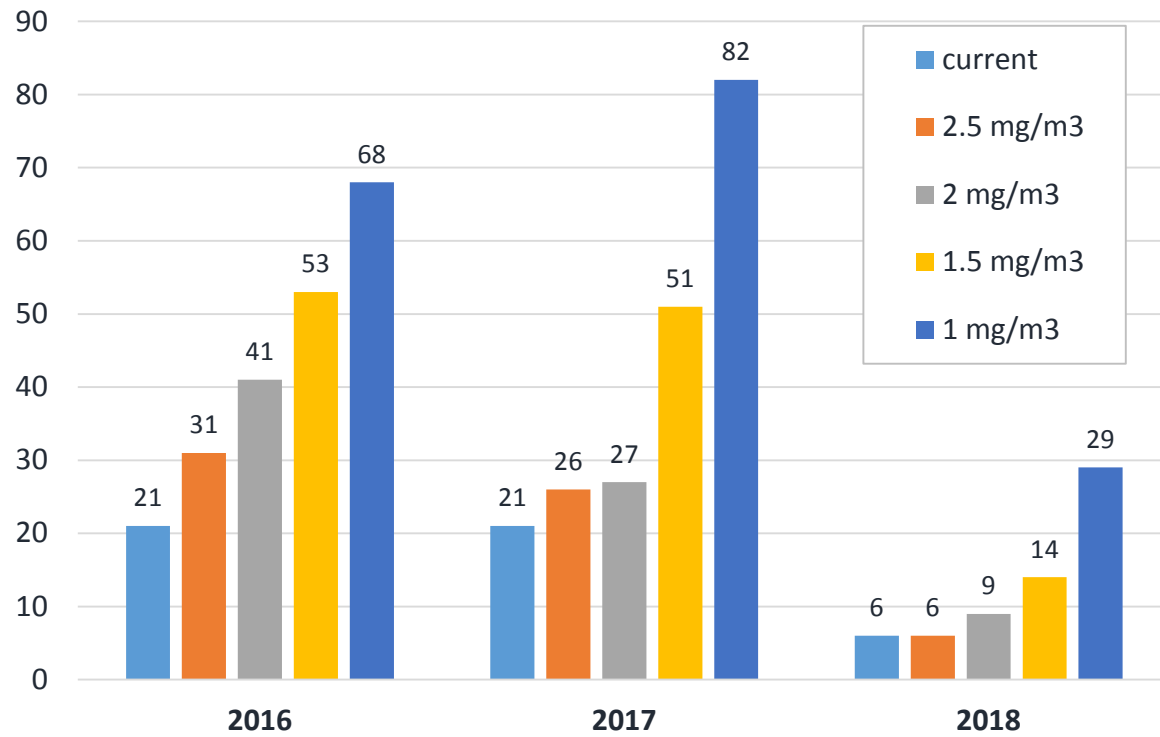
- Gas management audits
- ERZ Controllers and UMM forum
- DPM audits



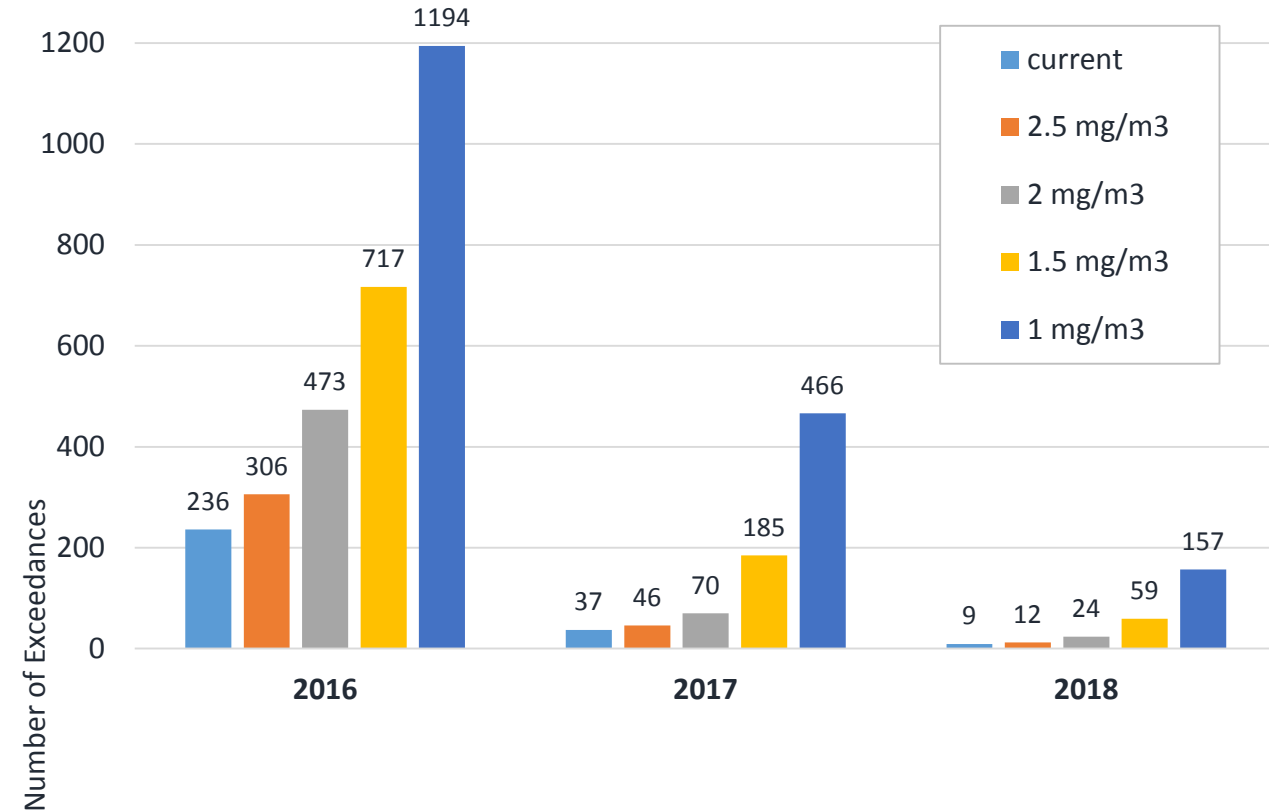
Events



Total Respirable Coal Dust Exceedances for Surface Mines - comparing exposure limits

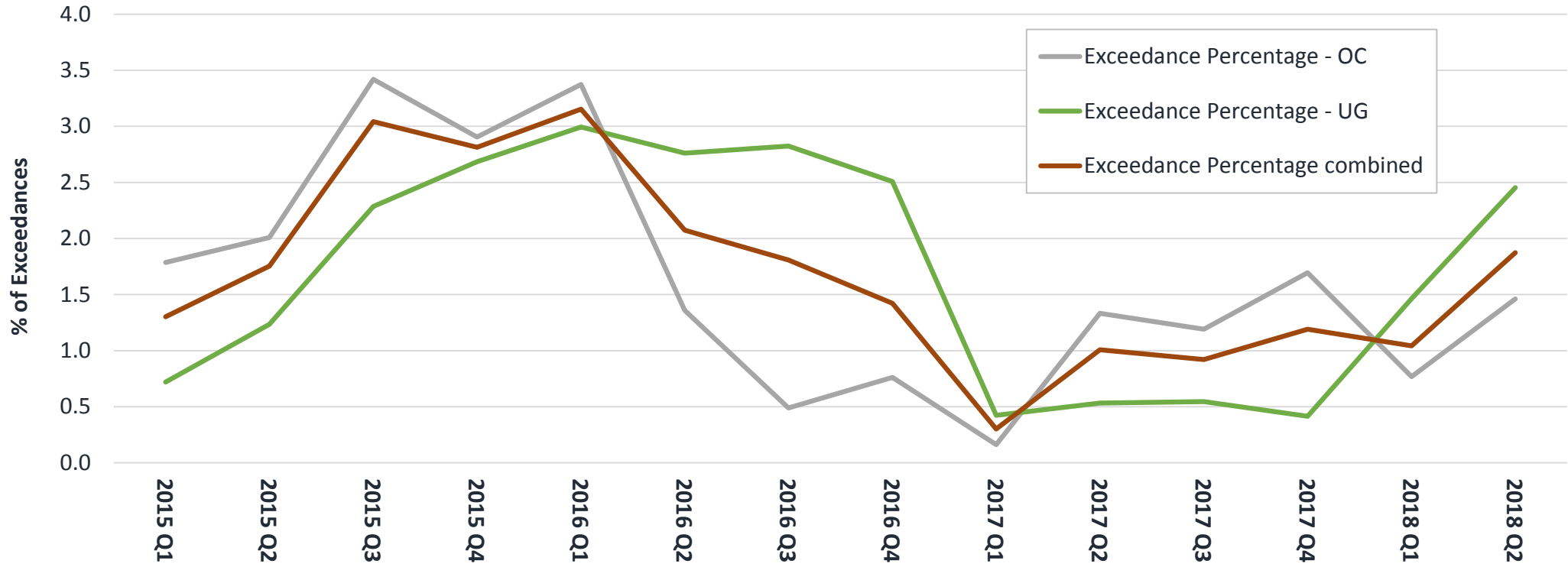


Total Respirable Coal Dust Exceedances for UG Mines – comparing exposure limits





% of Respirable Crystalline Silica Exceedances



Top three

- Lifting and slinging
 - Dragline swing rack incident
 - Screen exciter motor
- Gas exceedances
- Supervision focus

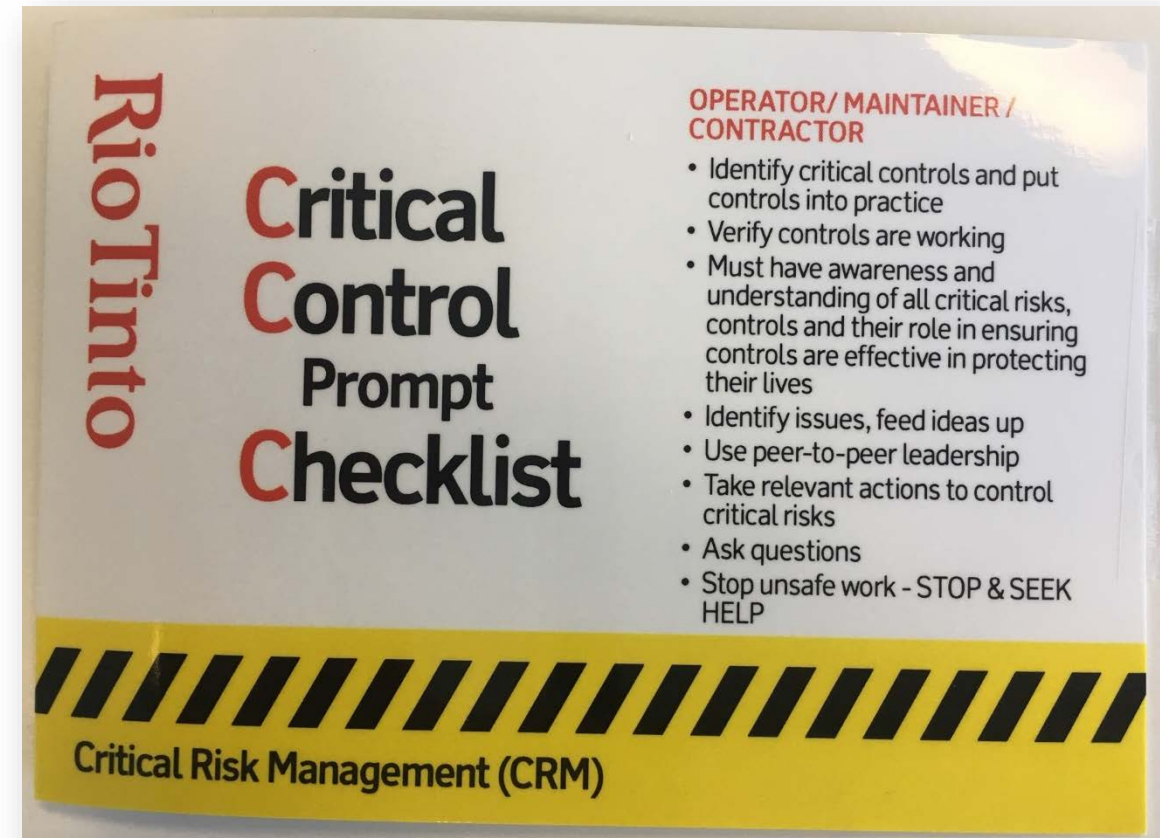


Emergency management



Year ahead

- Effectiveness of critical controls
- Silica
- Gas management open cuts
- Emergency preparedness





Luca Rocchi

Chief Inspector of Mines

Resources Safety and Health

3199 8003

Luca.Rocchi@dnrme.qld.gov.au